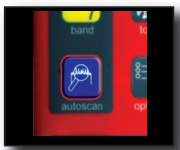


## Technical Features mediaMAX MINI S2CT

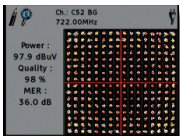
- ✓ Compact and light, with dimensions 270 x 170 x 70 mm and weight 1,8 Kg
- ✓ PRO 200 - PRO 201 functionality (Genius Series and 310 Headends)
- ✓ MAP Function (Meter Aided Programming)
- ✓ Extremely intuitive. Very easy to use
- ✓ High resolution spectrum with horizontal sweep and logarithmic amplitude
- ✓ Battery duration: 2,5 hours
- ✓ TFT 5" (MINI+ option: 6" HQ)
- ✓ Provides all the measurements in a unique window
- ✓ Advanced Data-logger
- ✓ Auto reference level in spectrum
- ✓ Digital picture in MPEG-2
- ✓ Satellite identifier
- ✓ Noise figure function
- ✓ DiSEqC motors control
- ✓ Auto identifier of the digital carriers
- ✓ Real measurements of BER
- ✓ Simple and fast upgrading through USB 2.0
- ✓ Data transfer to the PC through USB 2.0 stick
- ✓ SatCR compatible
- ✓ Wide connectivity: USB 2.0, RS-232, A/V IN, A/V OUT
- ✓ Constellation DVB-S/S2
- ✓ Constellation QAM: 16 QAM, 32 QAM, 128 QAM, 256 QAM

## Top features



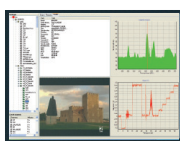
### Autoscan in Band & in Channel

Function with direct access button. It will carry out a searching in the band or in the channel. Due this functionality, you will detect automatically the channels in the band of tracking.



### Constellation

mediaMAX MINI allows viewing the constellation in QPSK and 8PSK signals. The constellation in QAM for modulations of 16QAM, 32QAM, 128QAM and 256 QAM is available in mediaMAX MINI.



### Evo Soft

In order to make easier the programming of repeaters and other needed parameters for configuring the automatic system of measuring (Datalogger), a new software for the PC has been developed. This software allows the user, easily with an assistant, the creation and storage of different repeaters and points of measurement, wich later on, the user will be able to introduce in the mediaMAX MINI through USB connection.

Now we can capture, the levels, the spectrum, the analogue and digital picture and the synchronism line of any signal to be processed, viewed or stored later on. Also it is possible to generate customized reports of your installations.

# Technical Features mediaMAX MINI S2CT

| RF standards                         |  |
|--------------------------------------|--|
| Range of measurements                | 20 dBuV to 130 dBuV  |
| Input impedance                      | 75 Ohms  |
| Terrestrial                          | B/G (CCIR), B/G (DE), B/G (IT), M (PAL), L/L' (France), I (UK), D/K/K' (OIRT), M/N (USA and Japan), B/B (Australia), D/K PAL |
| Picture demodulation                 | PAL, SECAM   |
| Satellite                            | Bands C and Ku   |
| Frequency                            |  |
| Range                                | 5-862 MHz and 900-2150 (MHz)   |
| Tuning                               | Continue in all the band   |
| Frequency resolution                 | 50 KHz   |
| Range of audio in analogue satellite | 4,5-9 MHz  |
| Analogue                             |  |
| Measurements                         | Level, Video/Audio, C/N, video line  |
| Resolution filter                    | 300 KHz  |
| Accuracy                             | 0,1 dB   |
| Tolerance                            | ±1,5 dB at 25°C on TER and ± 2 dB at 25°C on SAT   |
| Acoustic beeper                      | Audio frequency proportional to the signal strength  |
| Digital                              |  |
|                                      | <b>DVB-S</b>   |
| Measurements                         | Channel power, BER, MER, Total Errors, C/N, quality, measurement channels, noise margin                                      |
| Standards                            | DVB-S and DSS  |
| Constellation                        | QPSK   |
|                                      | <b>DVB-S2</b>  |
| Measurements                         | Channel power, BER, MER, Total Errors, C/N, quality, measurement channels, noise margin                                      |
| Standards                            | DVB-S2   |
| Constellation                        | QPSK and 8PSK  |
|                                      | <b>DVB-T</b>   |
| Measurements                         | Channel power, BER, MER, Total Errors, C/N, quality, measurement channels, noise margin                                      |
| Guard interval                       | 1/4, 1/8, 1/16, 1/32 and AUTO  |
| FFT Mode                             | 2K, 8K and AUTO  |
| Internal modulations                 | 64 QAM, 16 QAM and QPSK  |
|                                      | <b>DVB-C</b>   |
| Measurements                         | Channel power, BER, MER, Total Errors, C/N, quality  |
| Supported modes                      | ITU J.83 A (DVB-C) / C   |
| Symbol rates                         | Up to 7 Ms/s   |
| MER measurement                      | 35 dB max.   |
| MER accuracy                         | 0,1 dB   |
| Bandwidth                            | 7/8 MHz  |
| Constellation                        | 16, 32, 64, 128 and 256 QAM  |
| Monitor / Connectivity               |  |
| Dimensions                           | 5" TFT   |
| Interfaces                           | USB 2.0 / IN-OUT A-V / RS-232  |
| Feeding                              |  |
| Battery                              | Lithium - Ion  |
| Battery duration                     | 2,5 hours  |
| Power supply LNB                     | 5V, 13V, 18V, 13 V+22KHz. 18V+22KHz  |
| External feeding                     | 20V / 2.5 A  |
| Mechanical features                  |  |
| Dimensions                           | 270 x 170 x 70   |
| Weight                               | 1,8 + transport bag  |